

ALPHA KAPPA LAMBDA FRATERNITY RENOVATION

401 E. Daniel Street
Champaign, Illinois

Architect/Architect
RATIO Architects, Inc.
10 East Chester Street
Champaign, Illinois 61820
T: (217) 552-7832
F: (217) 552-7831

Structural Engineer
HDC Wickersheimer Engineers, Inc.
201 W. Springfield Ave., 4th Floor
Champaign, Illinois 61820
T: (217) 552-0081
F: (217) 503-3404

Mechanical / Electrical Engineer
Affiliated Engineers, Inc.
701 Devonshire Dr.
Champaign, Illinois 61820
T: (217) 365-3894
F: (217) 365-3895

**PRELIMINARY
NOT FOR
CONSTRUCTION**

SHEET ISSUE	6089079
REISSUE	

CHECKED BY	
APPROVED BY	
PROJECT NO.	07057.000

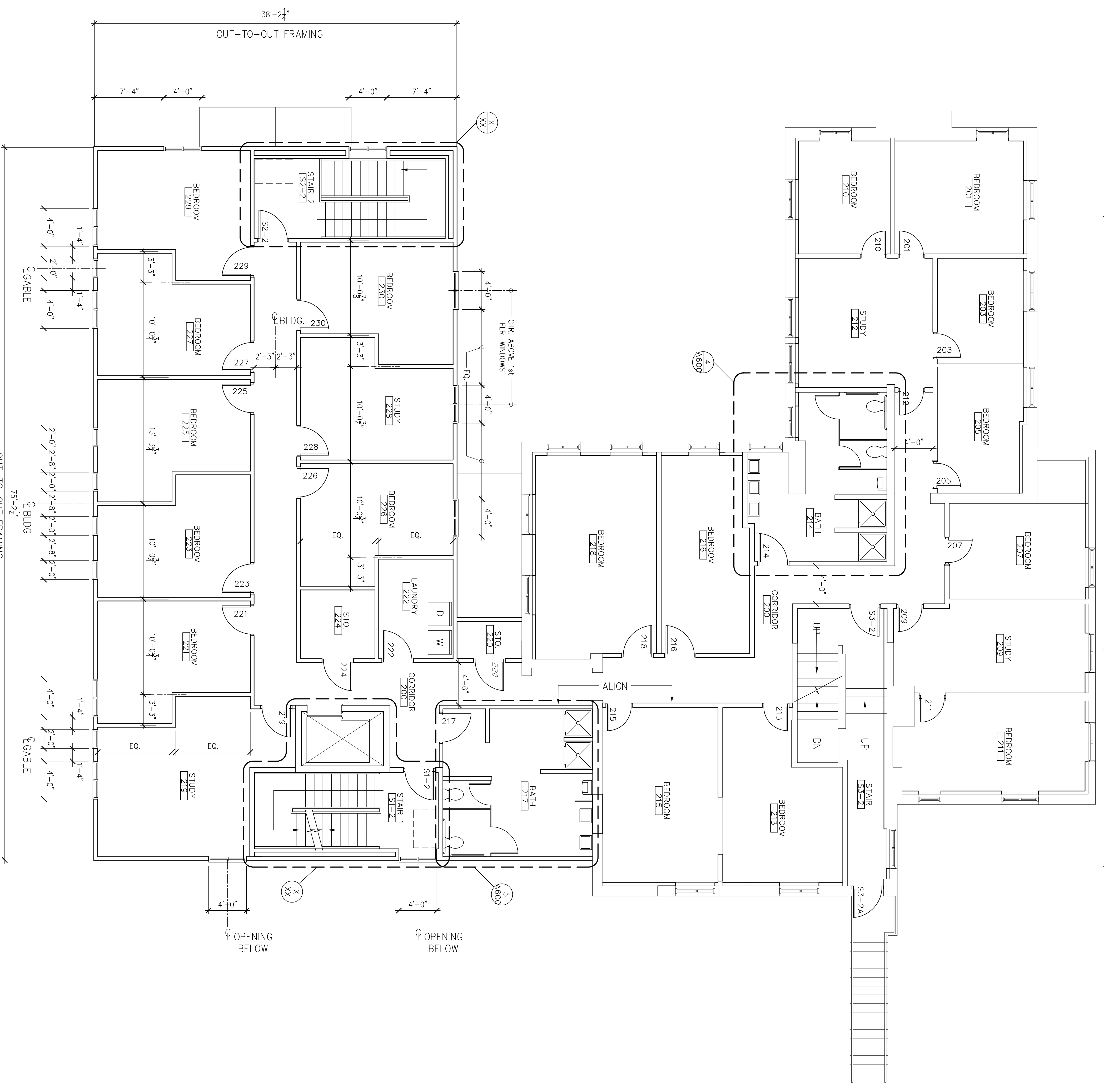
RATIO

COPYRIGHT NOTICE: THIS ARCHITECTURAL DRAWING IS THE PROPERTY OF RATIO ARCHITECTS, INC. AND IS TO BE USED ONLY IN CONNECTION WITH THE PROJECT AND SHALL BE USED ONLY IN ACCORDANCE WITH THE AGREEMENT WITH RATIO ARCHITECTS, INC. ANY REPRODUCTION OR DISSEMINATION OF THIS DRAWING WITHOUT THE WRITTEN CONSENT OF RATIO ARCHITECTS, INC. IS PROHIBITED. OTHER RIGHTS OF COPYRIGHT AND COMMON LAW RIGHTS ARE HEREBY SPECIFICALLY RESERVED.

SECOND FLOOR PLAN

SHEET NUMBER
A-102

- PLAN KEY NOTES:**
- REMOVE & REPLACE ALL WINDOWS IN THE CHAPTER HOUSE. TYPICAL, REMOVE & REPLACE ALL CASINGS, TRIM, SILLS, STOODS & APRONS. COLOR TO BE SELECTED BY ARCHITECT.
 - REMOVE & REPLACE THREE (3) PATIO DOORS, PROVIDED BY SAME MANUFACTURER AS THE WINDOWS, OR ALTERNATE DOOR MANUFACTURER MUST BE APPROVED BY ARCHITECT.
 - REMOVE & REPLACE EXISTING FRONT DOOR.
 - SAND & RENISH WOOD FLOORS.
 - ### INDICATES NEW DOOR, FRAME & HARDWARE, UNLESS OTHERWISE NOTED.
 - NEW DOOR & HARDWARE ON EXISTING FRAME.
 - NEW VCT FLOORING.
 - PAINT ALL WALLS IN THE ROOM.
 - NEW RUBBER FLOORING IN CORRIDOR.
 - NEW CLOSET W/SHELF & ROD.
 - NEW CERAMIC TILE FLOOR.
 - EXISTING DOOR/FRAME & HARDWARE TO REMAIN.
 - REPAIR DAMAGED WALL AND CEILING PLASTER IN THIS AREA.
 - FILL EXISTING OPENING. NEW WALL SURFACES TO MATCH AND BE FLUSH WITH ADJACENT EXISTING WALLS.
 - REPAIR WINDOW WELL AS NECESSARY. SEE TRF. DETAIL X/2202
 - NEW ELEVATOR IN NEW SHAFT.
 - NEW RAISED CONCRETE FLOOR TO MATCH ADJACENT AT THIS LOCATION. SEE STRUCTURAL.
 - NEW DOOR IN EXISTING OPENING.



SECOND LEVEL FLOOR PLAN
3/16" = 1'-0"