

**ALPHA KAPPA
LAMBDA
FRATERNITY
RENOVATION**
401 E. Daniel Street
Champaign, Illinois

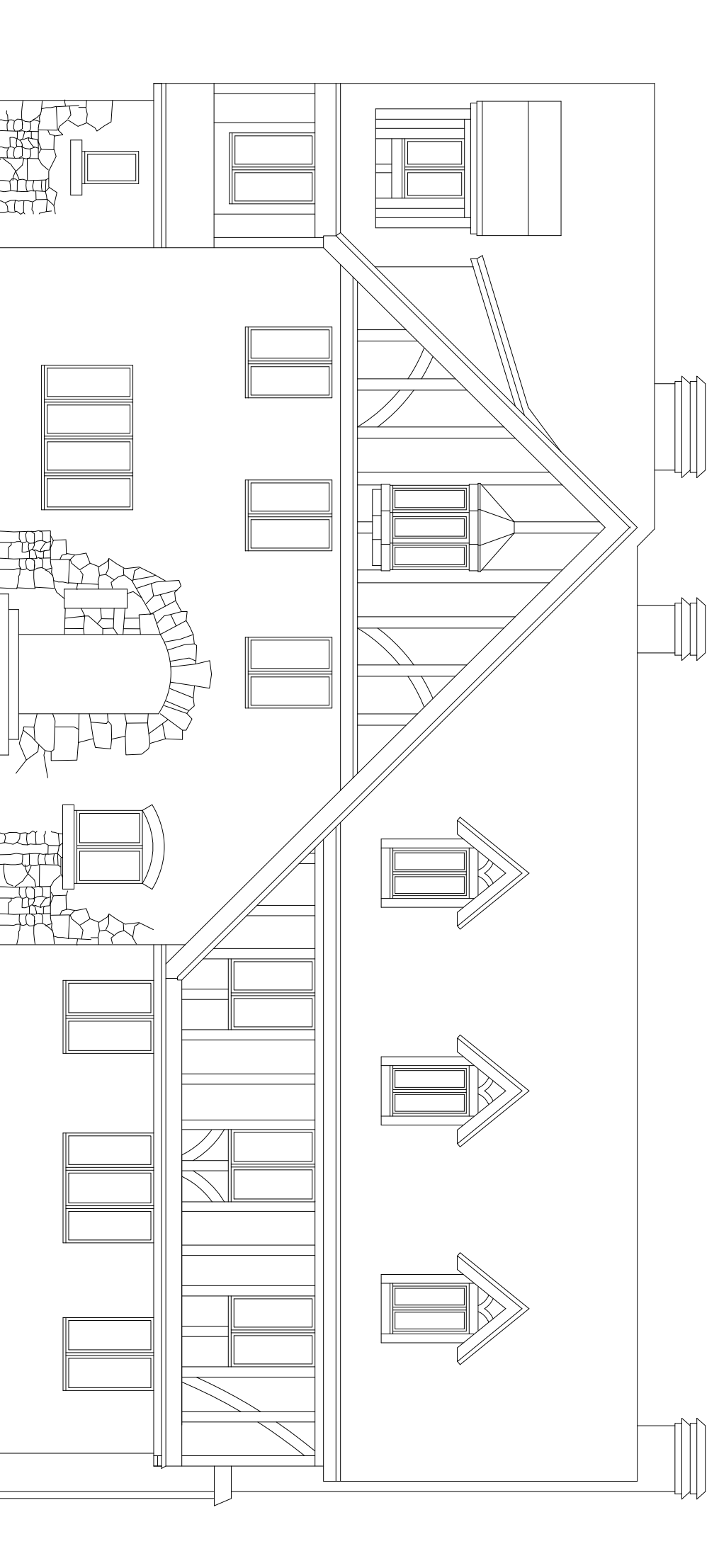
Architect/Architect
RATIO Architects, Inc.
10 East Chester Street
Champaign, Illinois 61820
t: (217) 352-7833
f: (217) 352-7831

Structural Engineer
HDC Wickersheimer Engineers, Inc.
201 W. Springfield Ave., 4th Floor
Champaign, Illinois 61820
t: (217) 352-0081
f: (217) 403-3404

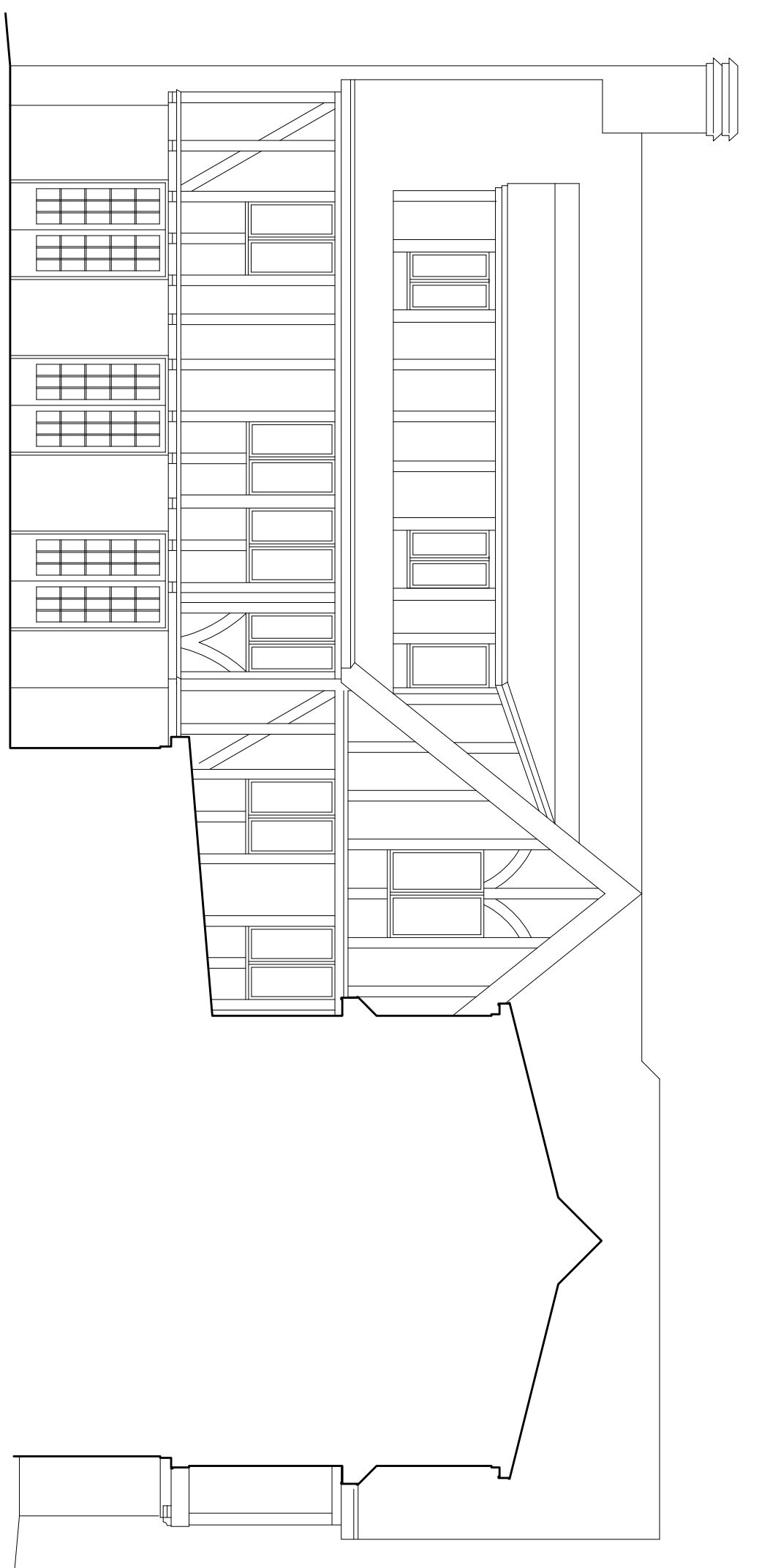
Mechanical / Electrical Engineer
Affiliated Engineers, Inc.
701 Devonshire Dr.
Champaign, Illinois 61820
t: (217) 363-3894
f: (217) 363-3895

**PRELIMINARY
NOT FOR
CONSTRUCTION**

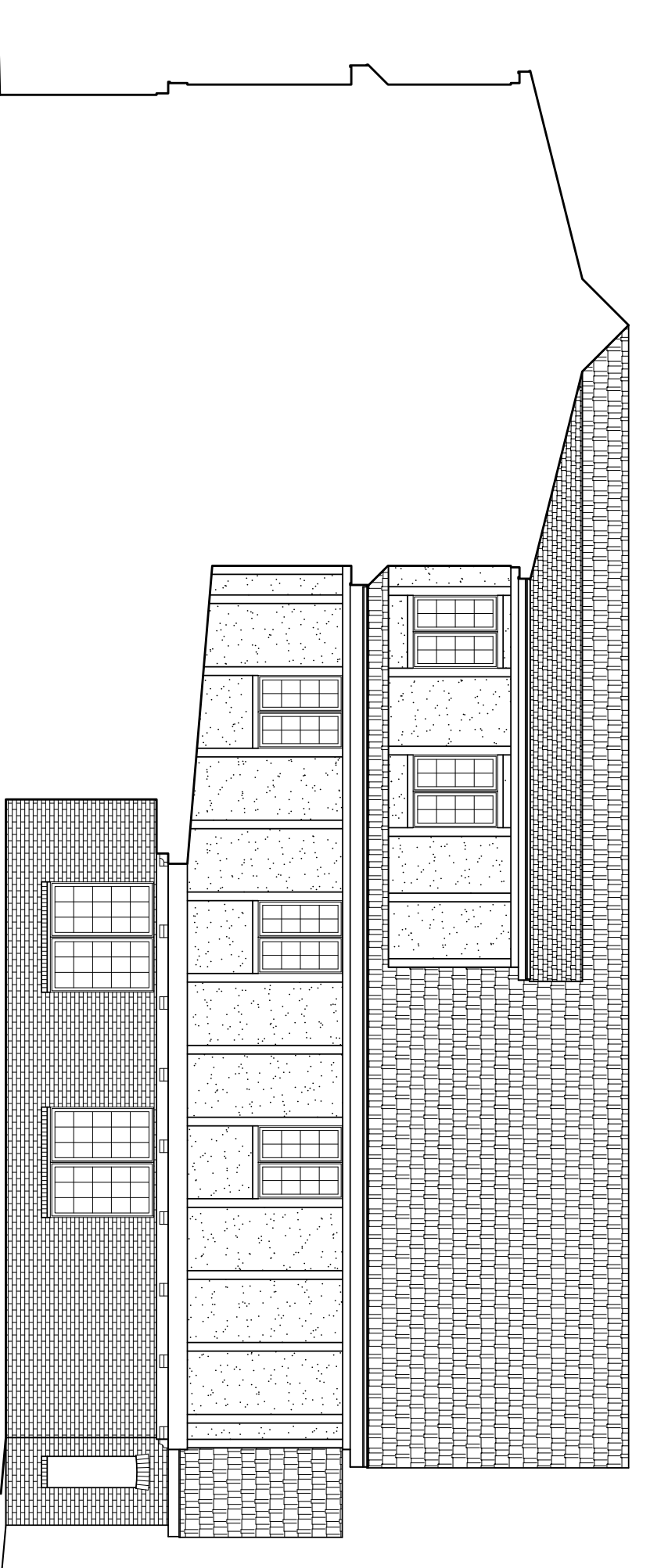
SHEET ISSUE	608909
REISSUE	
CHECKED BY	
APPROVED BY	
PROJECT NO.	07057.000
<small>COPYRIGHT NOTICE: THIS ARCHITECTURAL DRAWING IS THE PROPERTY OF RATIO ARCHITECTS, INC. AND IS TO BE USED ONLY IN CONNECTION WITH THE PROJECT AND SITE SPECIFICALLY IDENTIFIED THEREIN. NO PART OF THIS DRAWING IS TO BE REPRODUCED, COPIED, DISTRIBUTED OR DISSEMINATED IN ANY MANNER WITHOUT THE WRITTEN CONSENT OF RATIO ARCHITECTS, INC. ANY VIOLATION OF THESE TERMS SHALL BE CONSIDERED A VIOLATION OF FEDERAL LAW RIGHTS OF COPYRIGHT AND COMMON LAW RIGHTS OF TRADE SECRECY AND OTHERWISE ARE HEREBY SPECIFICALLY RESERVED.</small>	
SHEET TITLE	
EXTERIOR ELEVATIONS	
SHEET NUMBER	
A-200	



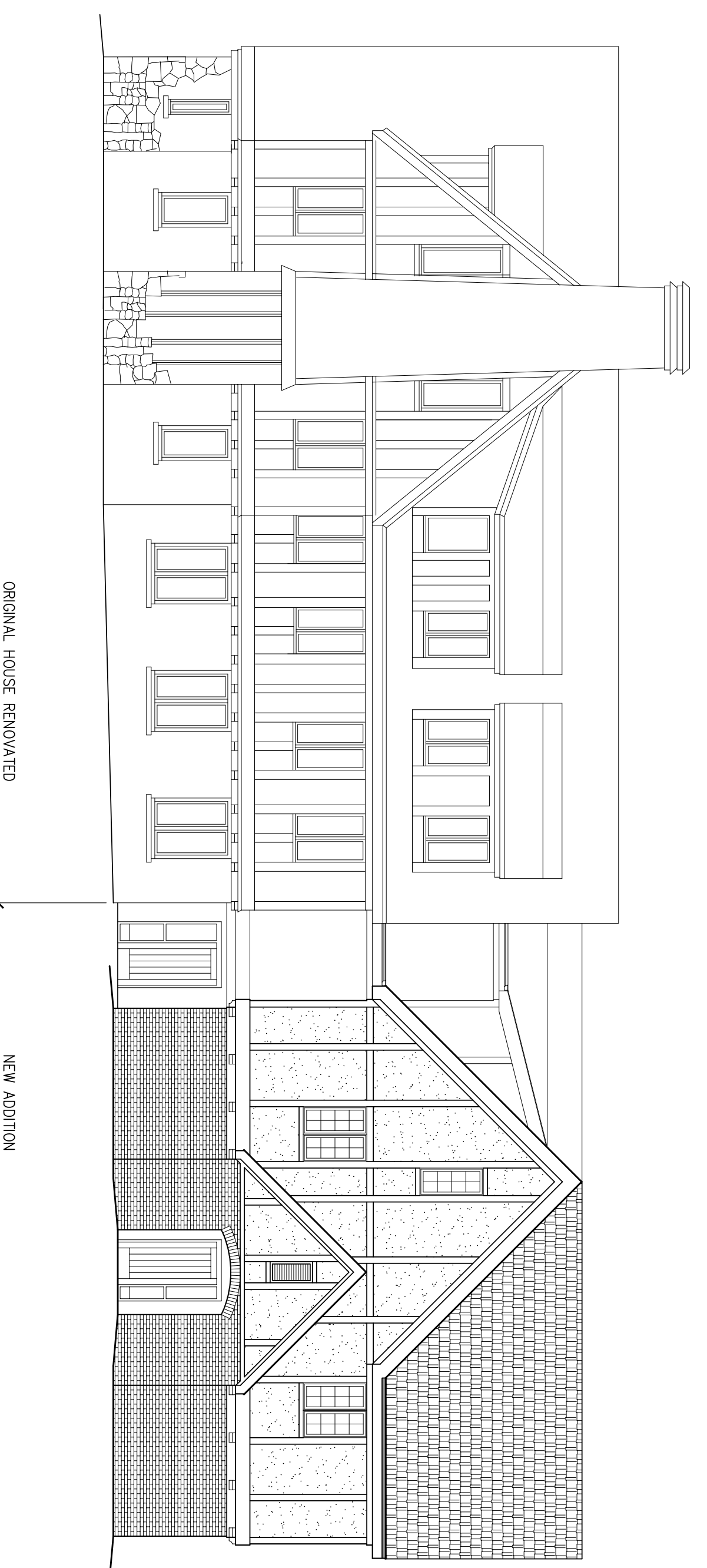
1
A-200
NORTH ELEVATION OF ORIGINAL HOUSE
1/8" = 1'-0"



2
A-200
SOUTH ELEVATION OF ORIGINAL HOUSE
1/8" = 1'-0"



3
A-200
NORTH ELEVATION OF NEW ADDITION
1/8" = 1'-0"



4
A-200
WEST ELEVATION
1/8" = 1'-0"

ORIGINAL HOUSE RENOVATED

NEW ADDITION